



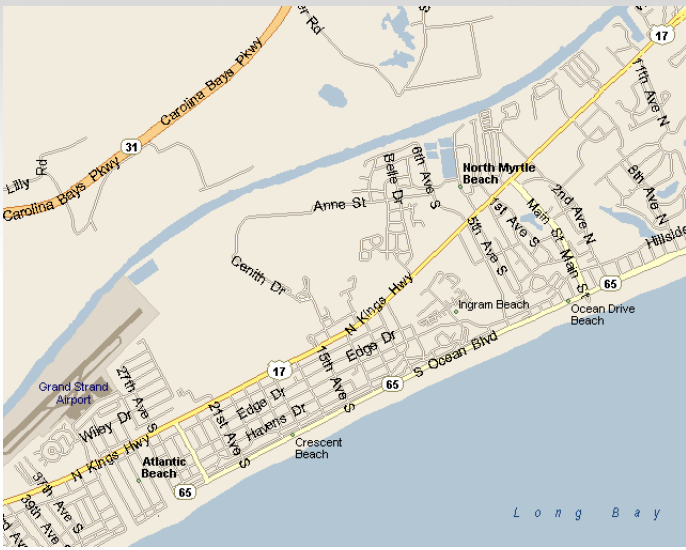
RETAIL FOR LEASE



OPERATING TENANT

Please do not disturb

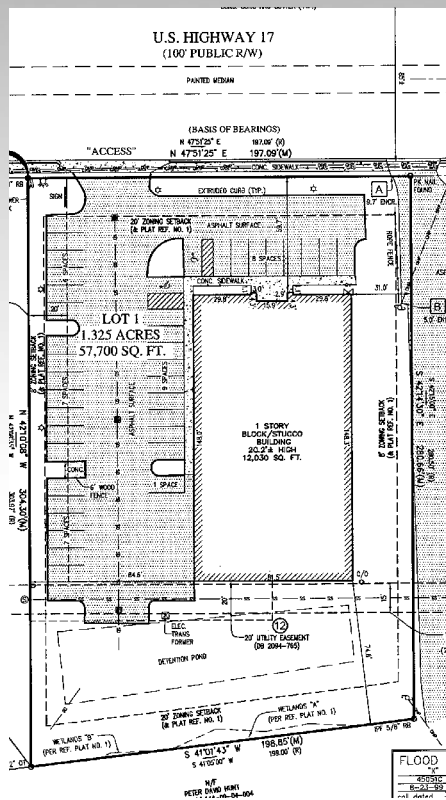
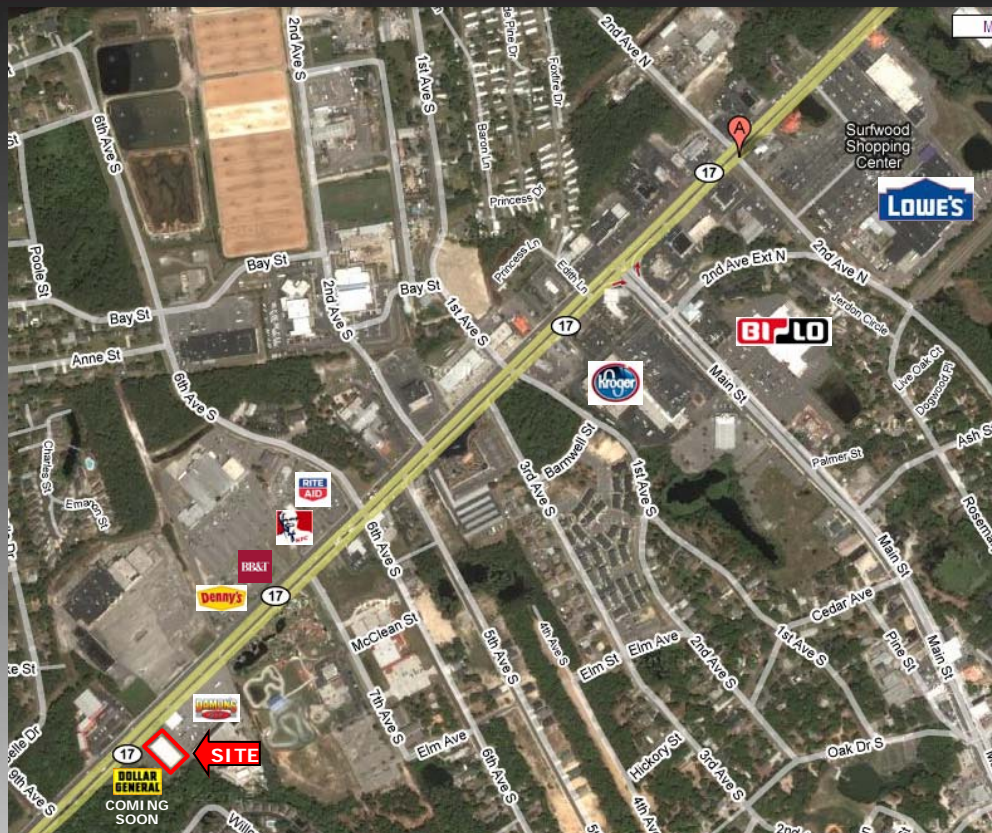
N. MYRTLE BEACH, SOUTH CAROLINA



- **ADDRESS:** 851 Highway 17 South, N. Myrtle Beach, South Carolina 29582
- **SIZE:** +/- 12,000 SF (will consider subdividing) on +/- 1.325 Acres
- **RENTAL RATE:** Call
- **PURCHASE PRICE:** Call
- **TRAFFIC COUNTS:** 47,000 AADT on Highway 17 South
- **DEMOGRAPHICS:**

	1 mile	3 miles	5 miles
Population	4,521	13,846	26,878
Avg HH. Income	\$46,532	\$50,529	\$55,915

PROPERTY LOCATION



de DIVARIS
REAL ESTATE, INC.

Diana Teitsma ■ dteitsma@divaris.com ■ (704) 442-1988 ext. 101
 Guy McBride ■ gmcbride@divaris.com ■ (704) 442-1988 ext. 102
 Chris Sheppard ■ csheppard@divaris.com ■ (704) 442-1988 ext. 106
 2115 Rexford Road ■ Suite 300 ■ Charlotte, NC 28211 ■ www.divaris.com

